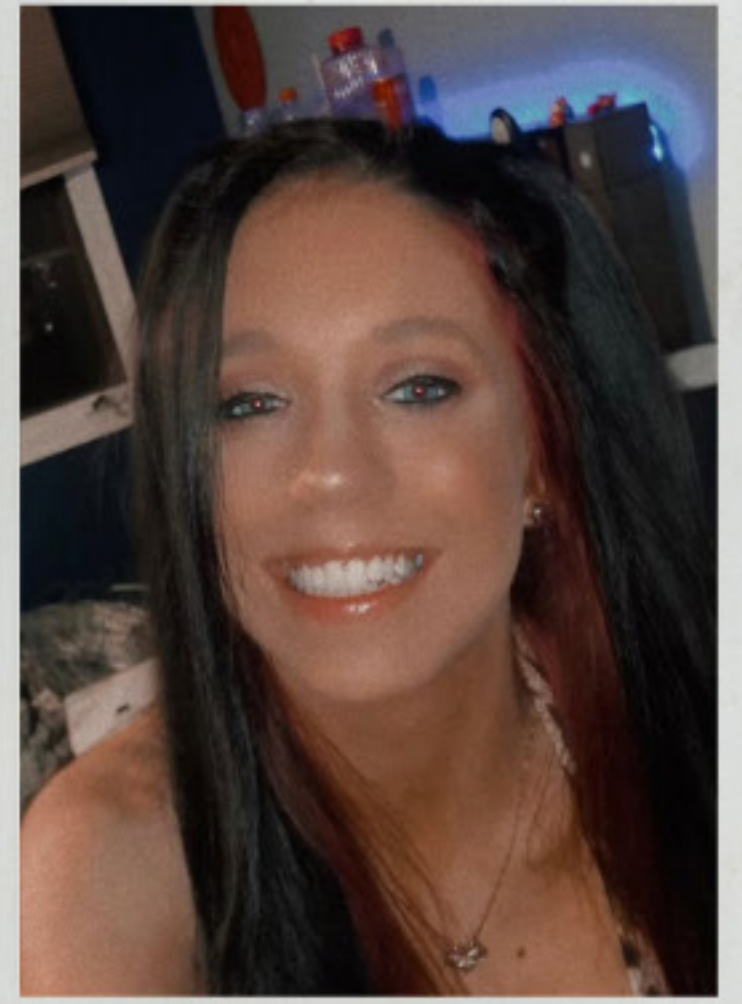


Start

COLUMBIA COLLEGE STUDENT



GIANNA WITTE  
SECOND-YEAR  
ORLAND PARK, ILLINOIS

THE DIFFERENCE/BIASES EXAMINED  
AND CONSIDERED IN DETAIL

**Genderism**

is a social system that argues gender is a binary that there should be only two genders, male and female. This discrimination occurs when people denigrate both genders and are judged to have each gender based on according to what society is used to.

- One has to follow the behavioral, cultural or psychological of the opposite sex to be considered as the other sex.
- One might not be the person in society's view.
- The idea is to create a social system that is based on a binary gender system.
- It is a social system that is based on a binary gender system.
- It is a social system that is based on a binary gender system.
- It is a social system that is based on a binary gender system.

**Territoriality**

is an action based on the idea that one should control over a certain territory. It is a social system that is based on a binary gender system.

- It is a social system that is based on a binary gender system.
- It is a social system that is based on a binary gender system.
- It is a social system that is based on a binary gender system.
- It is a social system that is based on a binary gender system.
- It is a social system that is based on a binary gender system.
- It is a social system that is based on a binary gender system.

**ABLEISM**

Discrimination in favor of able-bodied people.

- It is a social system that is based on a binary gender system.
- It is a social system that is based on a binary gender system.
- It is a social system that is based on a binary gender system.
- It is a social system that is based on a binary gender system.
- It is a social system that is based on a binary gender system.
- It is a social system that is based on a binary gender system.

**Multiculturalism**

the idea that cultures, races, and traditions, particularly those of minority groups, should be preserved and celebrated. It is a social system that is based on a binary gender system.

- It is a social system that is based on a binary gender system.
- It is a social system that is based on a binary gender system.
- It is a social system that is based on a binary gender system.
- It is a social system that is based on a binary gender system.
- It is a social system that is based on a binary gender system.
- It is a social system that is based on a binary gender system.

- We as individuals celebrate our diversity and share our differences in so many ways.
- We're always surrounded by so many different people and unique thoughts from all around the world.
- What's a better place to be gathered at than a table.
- Tables not only allow us to use them, but it also allows us to gather around every day and help us get to know each other more.
- It brings us all together with no matter what our differences are.

The team decided to think of the design and sketch it separately to see how we can combine our own unique thoughts into one strong product.

ALGONQUIN STUDENT



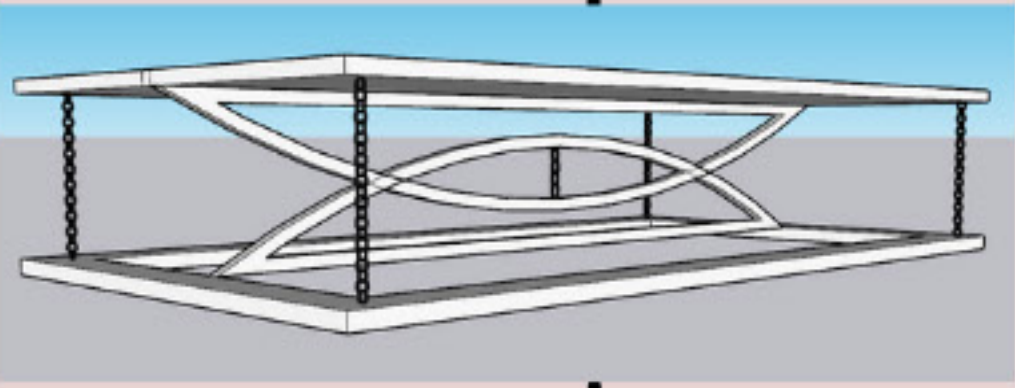
SEREINE EBLAKHI  
FOURTH-YEAR  
WINDSOR, ONTARIO

THIS IS OUR VISION

NEXUS TABLE  
THE DESIGN OUTCOME



THE DESIGN  
PROCESS



THE DESIGN  
OUTCOME

For our design outcome instead of choosing one particular design, we decided to incorporate and integrate everyone's sketches into one final form.

While creating the Nexus table our sole purpose was to create something that shared the feeling of connection with each other. For that reason, each section of our table plays a very important role while providing memorable meaning behind it.

The table as a whole represents the world and the tensegrity chains that Sereine incorporated represent the different cultures in this world. This section of the design plays a key role because if one culture ceases to exist the table will collapse. Even with how the world is today each country plays a huge role in shaping a better tomorrow.

In addition to this design we wanted to make the table more useful so we included Gianna's storage into the seating which contains books of different cultures, while also incorporating my checkerboard pattern inside the table to represent our differences as a whole. The world map itself is an interactive piece that Maria incorporated which allows the user to flip up certain parts of the continents, which allow the individual to explore and learn information about the culture surrounding that area.

As a result, we as a team decided to call our design the Nexus Table because "Nexus" in Latin means "Connection" and that is what we as a team had when creating this final form.

ALGONQUIN STUDENT



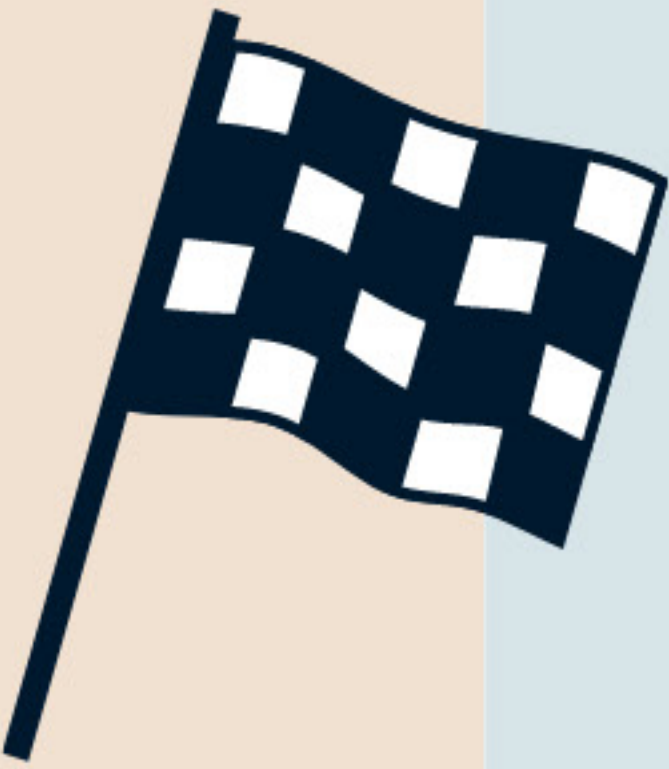
TALIA WRIGHT  
SECOND-YEAR  
OTTAWA, ONTARIO

Some challenges that we as a team faced when creating our final design was...

- Figuring out which design we would go with
- Choosing what kind of product we will build that will celebrates diversity as an opportunity for positive change
- Figuring out how we wanted the final layout of the design to look like



THE CHALLENGES  
FACED



Some challenges that we as a team faced throughout this project was ...

- Figuring out schedules and meeting times.
- Balancing this project, other school work, our jobs, etc.
- Wi-Fi connection issues

MTSU STUDENT



MARIA PINA  
SECOND-YEAR  
NASHVILLE, TENNESSEE

Finish